

**350-360 MOUNT KEMBLE AVENUE**  
MORRISTOWN, NEW JERSEY

**MTKEMBLE**  
CORPORATE CENTER

**NEW AMENITY: SHUTTLE SERVICE TO MORRISTOWN GREEN & TRAIN STATION**



## CLASS A OFFICE SPACE FOR LEASE

### Features & Highlights

- 229,500 RSF, two-building complex situated on 38 acres
- 78,478 RSF available (divisible to 4,000 RSF)
- Ample parking
- On-site management
- Institutional ownership
- Recently renovated lobbies & common areas
- Recently renovated full-service cafeteria
- Fitness center
- 24/7 card key access
- Back-up generator
- Tranquil, park-like setting with 3-acre reflecting pond and walking/jogging/biking trails
- Prime location in proximity to Morristown Green

**Recent  
Renovations**



For more information, please contact:

**MARC J. TREVISAN**  
Executive Vice President  
+1 201 508 5217  
marc.trevisan@cushwake.com

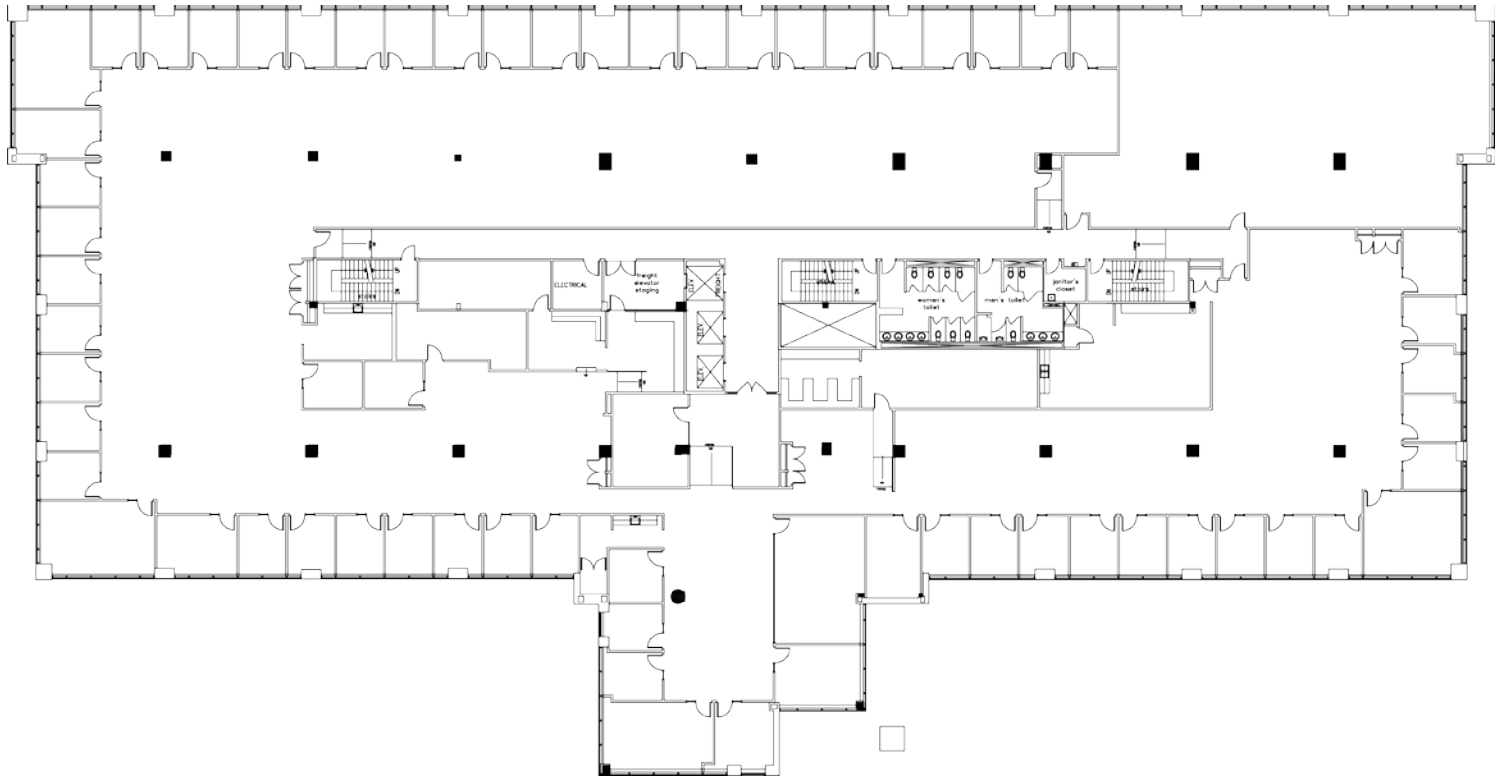
**DAVID DEMATTEIS**  
Director  
+1 201 460 3383  
david.dematteis@cushwake.com

**MARK ZAZISKI**  
Associate Director  
+1 201 508 5276  
mark.zaziski@cushwake.com

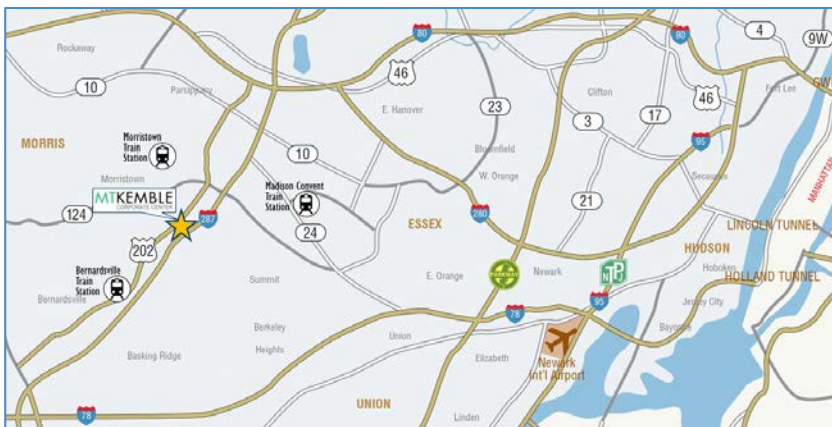


The depiction in the included photograph of any person, entity, sign, logo or property, other than Cushman & Wakefield's (C&W) client and the property offered by C&W, is incidental only, and is not intended to connote any affiliation, connection, association, sponsorship or approval by or between that which is incidentally depicted and C&W or its client. This listing shall not be deemed an offer to lease, sublease or sell such property; and, in the event of any transaction for such property, no commission shall be earned by or payable to any cooperating broker except if otherwise provided pursuant to the express terms, rates and conditions of C&W's agreement with its principal, if, as and when such commission (if any) is actually received from such principal. (A copy of the rates and conditions referred to above with respect to this property is available upon request.)

## 350 Mt. Kemble Avenue – 2nd Floor



## Location Map



## Location & Access

- Easy access to I-287, I-78, I-80, Route 24 and Routes 202/206
- 1.5 miles from Exit 33 (Harter Road) on I-287
- 2.5 miles from Morristown Green and Morris County Courthouse
- Two train stations less than 5 miles away (Morristown & Convent Station)
- Less than 30 miles from New York City
- Numerous hotels, retail and restaurants within close proximity

For more information, please contact:

**MARC J. TREVISAN**  
Executive Vice President  
+1 201 508 5217  
marc.trevisan@cushwake.com

**DAVID DEMATTEIS**  
Director  
+1 201 460 3383  
david.dematteis@cushwake.com

**MARK ZAZISKI**  
Associate Director  
+1 201 508 5276  
mark.zaziski@cushwake.com

**CUSHMAN & WAKEFIELD OF NEW JERSEY INC.**  
Licensed Real Estate Broker  
One Meadowlands Plaza, 7<sup>th</sup> Floor  
East Rutherford, NJ 07073  
cushmanwakefield.com